



DECAMERON EXPLORER AMAZONAS | *Explore Colombia with us*

DECAMERON EXPLORER

Decameron Explorer stands out as a Destination Management Company with a successful history in the tourism industry in South and Central America with over 20 years of experience. Decameron Explorer is your local on site partner to operate and supervise the successful outcome for services rendered to individuals, incentive groups, tour-operator services, conventions, V.I.P. services, charter flights, tailor-made programs, transportation services. Decameron Explorer is the direct link to the best chain of All-Inclusive Hotels and Resorts of Central and South America, Decameron Hotels. Decameron Explorer offers the best programs in each destination including excellent options in transport and tour guide services in the most convenient category and budget for each client.

At the airport in each destination, Decameron Explorer has its own-operated offices where dedicated personnel welcome the arriving passengers with special permits to enter the international dock, immigration and customs areas. Thanks to this infrastructure, Decameron Explorer, with the support of professional tour guides, can organize group baggage identification to speed up the process of distribution to hotel rooms and manage pre-registrations in order to expedite the check-in process at the hotels.

Currently Decameron Explorer has offices in Panamá, El Salvador, Ecuador, Colombia, Haití and Peru. Among the personnel who work for Decameron Explorer there are professionals experienced in groups, incentives and conventions management, who are always available starting at the quote through to its execution.

SERVICES

Among the services, Decameron Explorer (DMC) offers:

- Commercial airline reservations and sale.
- Charter flight management and logistics.
- Transfers of individuals and private groups
- Eco-touristic, cultural, historical, adventure, fishing and scuba diving excursions.
- Roundtrip programs in Panamá (in combination with San Blas, Bocas del

Toro, Darién jungle and Chiriquí highlands), El Salvador (encompassing the Mayan World including Guatemala and Honduras), Ecuador (the breathtaking Galápagos islands, historical and colonial Cuenca, Guayaquil, Quito), Peru (in combination with Lima, Punta Sal, enchanting Cusco, magical Machu Picchu, Trujillo, Chiclayo and Chachapoyas) and Colombia (with the Caribbean in destinations such as San Andrés and Providence Islands, the unequaled and historic Cartagena, the Panaca Theme Hotel and the exotic Amazon).

- Specialty programs for groups, incentives and conventions (personalized for each client) with options for lodging, meals, transfers, entertainment, water sports, etc.
- Educational Programs Decameron Es-Cool.
- Give Back community programs.
- Personalized service at each Sales and Hospitality counter 7 days a week.

TRANSPORT INFRASTRUCTURE

A complete fleet of vehicles, boats and planes assure excellent service in all our excursions, eco-tours and transfers.

HUMAN RESOURCES

We offer a team of organizers, coordinators and professional guides with more than 10 years of experience in handling cruises and charters, who can direct tours to the most interesting places in each country, with fluency in several languages (Spanish, English, German, Italian, Portuguese, French, Russian).

HACCP HEALTH & SAFETY PROGRAM

Decameron Explorer actively participates in Health & Safety programs. A team of Health & Safety Coordinators, trained to achieve the standards and regulations on Food Safety are INCLUDED in Decameron Explorer's staff. HACCP is a food handling and operating approach that promotes food safety by identifying food hazards and applying and monitoring appropriate control measures at points, critical to safety, reducing the risk of food associated illness in guests, and thereby reducing the number of claims. This team audits all tours and restaurants included in Decameron Explorer's portfolio, providing basic health & safety procedures training to our food & beverages suppliers.

COLOMBIA AMAZONAS



Extreme adventure

Amazonas, this region of dense rainfall, considered "the world's Lung," is marked by the passage of the Amazon River, the largest of all, and its numerous tributaries, which in their course form hundreds of islands. Here is found one of the most important nature reserves, the Amacayacu National Natural Park, interned in the greatest ecological reserve on the planet, with an unimaginable abundance of vegetable and animal species. Admire the Victoria Regia, the largest lotus in the world, and the famous pink dolphins in the Tarapoto Lakes. To visit the Isla de Los Micos Natural Reserve in the Amazon is to live directly with nature; a variety of species in their natural habitat will accompany us in a tour along aerial and waterway paths where we can observe the Fraile Monkeys, practice Canopy and buy handicrafts from the Yaguas Indians. To be in the Amazon is to let yourself be carried away by a world which, without having met it personally, results very difficult to imagine.

BEING IN THE AMAZON IS LETTING YOURSELF BE CARRIED AWAY BY A WORLD THAT, WITHOUT KNOWING IT, IS VERY DIFFICULT TO IMAGINE.

SUNSET SAFARI

The lakes in the tributaries of the Amazon are unique ecosystems, with a profusion of great variety of wildlife. From lake to lake there are many differences, depending on the size of each and the type of forest surrounding it.

In high water we have choose the Saraiva Lake: and low water Gamboa lake located in the state Loreto Peru, we will make a nighttime excursion ni boats with capacity for 5 - 10 persons whar along the banks we will discover the shining eyer of alligatours among which are found the blak alligatos, an importat fierce predator in the amazon. This reptile is very similar to the crocodile and can grow up to 6.5 meterin length. The alligartors''diet incluides fish, danta,(tapirs), and other mammals of the region .

The black alligator is under protection because since the last century , hunting of this animal (or its meat or skins) has reduce the population

Departure of the excursion depends on these conditions:

Level of difficulty: I.

Minimum: 6 pax · **Maximum:** 18 pax

Includes: River transportation in native motor driven boats for 5 – 18 persons, professional Spanish speaking guide, flashlights, refreshments.

Recommendations: Pants and long-sleeved short, repellent, comfortable closed shoes.

Note: This excursion is not recommended for pregnant women or persons under the influence of alcohol or drugs. It is not recommended for persons with back problems or recent surgery. The tour guide reserves the right to deny admittance to any participant who does not comply with these requirements (without right to reimbursement).

DEPARTURE: 1:30 P.M. · RETURN: 5:30 P.M.





NATURAL RESERVE CERCA VIVA

After a brief trip by car, we will reach a very special destination: the Cerca Viva reserve, a model of man-nature interrelationships and diversity of agro-forestry. Here we will walk the eco route "the dynamic of the jungle" with a space of interrelationship and environmental education which brings visitors close to and illustrates the dynamic of the forest (flora and fauna). During the trip it is very likely to be able to observe an incredible variety of fabulous insects, distinct classes of birds, boquiblanco monkeys, poison frogs, serpents, guaras and squirrels, among others.

While traveling the paths of the Saltarines, the Boquiblanco, la Quebrada, la Siringa and Ranas, the visitor comprehends the need to conserve and manage sustainably the forest resources so that our descendants may also enjoy this wonderful ecosystem: the Amazon jungles.



Departure of the excursion depends on these conditions:

Level of difficulty: I.

Minimum: 6 pax · **Maximum:** 10 pax

Duration of the hike: approx. 90 minutes

Includes: Land transportation by automobile, helmet, vest, entry to the reserve, professional Spanish speaking guide, refreshments or fruit in harvest.

Recommendations: Repellent, lightweight, light-colored (green or blue) clothing; shoes appropriate for walking, sun block, hat.

Note: We will not accept persons under the influence of alcohol or drugs.

Load capacity: 10 persons per trip. Maximum 3 trips daily.

DEPARTURE: 9:00 A.M. · **RETURN:** 12:00 M.

DEPARTURE: 2:00 P.M. · **RETURN:** 5:00 P.M.

KAYAKING IN YAHUARCACA LAKES

The Amazon is formed by a humid tropical forest which acts as an environmental thermo regulator and recipient of the mega biodiversity and genetic deposit of fauna and flora. Rowing through the lakes of Yahuaracaca, whose ecological diversity connects it with the environment, one can travel through the jungle which is flooded in wintertime and enjoy exotic countryside, navigate among rubber trees, red cedar, mahogany and capirona; the great renaco with its aerial roots and its magical environment; flora and fauna such as birds (herons, tuqui-tuqui, needle ducks, kingfisher, arrendajos, oropéndolas, eagles, hawks), mammals such as the lazy monkey, and in certain seasons of the year, pink and grey dolphins, as well as reptiles, amphibians, fish, insects and a gamut of plants without precedence such as the famous Victoria Regia (world's largest lotus).

If you row silently through this water full of life, you can enjoy a unique concert, product of the jungle. From the kayak we can contemplate the scenery accompanied by expert environmental interpreters from the region.

Departure of the excursion depends on these conditions:

Level of difficulty: I-II.

Minimum: 6 pax · **Maximum:** 48 pax

Includes: Land transportation, kayak for two persons with life jackets and oars, professional Spanish speaking guide, refreshments.

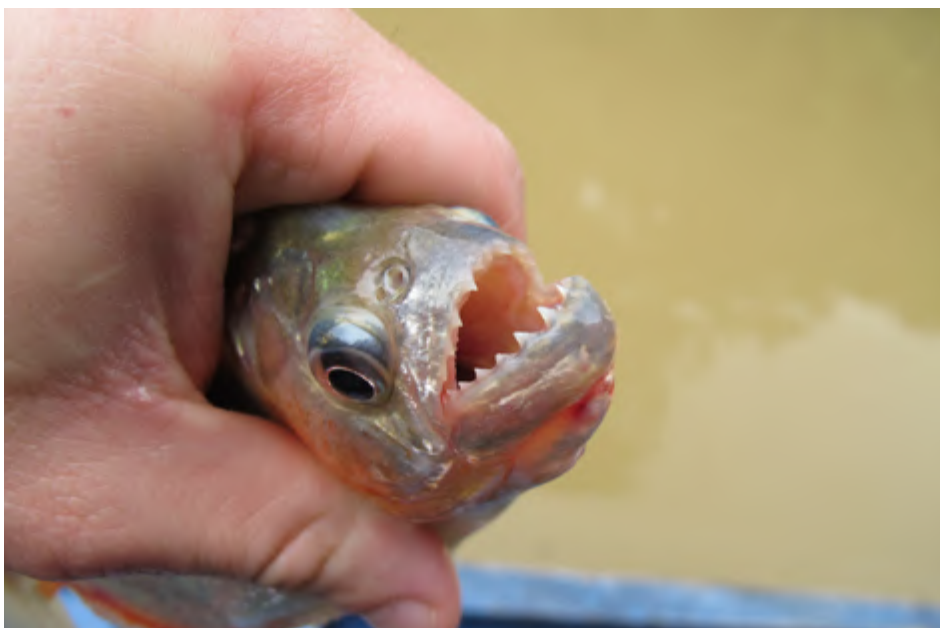
Note: Please take into account that this excursion requires optimum physical condition. The excursion guide reserves the right to reject any participant who does not fulfill this requirement, without right to reimbursement. This excursion is not recommended for pregnant women or persons under the influence of alcohol or drugs. It is not recommended for persons with back problems or recent surgery. The tour guide reserves the right to deny admittance to any participant who does not comply with these requirements (without right to reimbursement).

Recommendations: Lightweight clothing, hat, repellent, bathing suit, tennis shoes or wet shoes, sun block, an additional set of clothes. Do not carry valuable objects which may fall in the lake and get wet or lost.

DEPARTURE: 9:00 A.M. · RETURN: 12:00M.

DEPARTURE: 2:00 P.M. · RETURN: 5:00 P.M.





THE ART OF NATIVE FISHING

The Amazon jungle is an exuberant region because of the abundant rain it receives all year long. The Amazon is the largest river in the world and its basin forms the greatest tropical rain forest on the planet. The Amazon has extraordinary natural wealth, and with more than 100 tributary rivers, there is a biodiversity of fish, among which is found the pirarucu, the largest fresh-water fish in the world.

We will enjoy a day of adventure with native-style fishing with low ecological impact; we can try our hand with the calm of a big fish, and even stop to fish for piranha with a balsa rod and 3-pronged Indian harpoon, fish for bagre (catfish), dorado, sardines, etc.



Departure of the excursion depends on these conditions:

Level of difficulty: II.

Minimum: 2 pax · **Maximum:** 5 pax

Includes: River transportation in typical canoes with capacity for 6 persons, skilled fisherman Spanish speaking native guide, bait, arrows, refreshments, waterproof.

Recommendations: Sun block, lightweight clothing, tennis shoes or wet shoes, hat, sunglasses, repellent.

Note: This excursion is not recommended for pregnant women or persons under the influence of alcohol or drugs. It is not recommended for persons with back problems or recent surgery. The tour guide reserves the right to deny admittance to any participant who does not comply with these requirements (without right to reimbursement)

DEPARTURE: 8:00 A.M. · RETURN: 12:00 M.
DEPARTURE: 2:00 P.M. · RETURN: 6:00 P.M.

NATURAL RESERVE ISLA DE LOS MICOS

Dare to live a new adventure in Isla de los Micos Natural Reserve with 450 hectares, located 35 km. from Leticia and 45 minutes upriver on the Amazon. Discover the paths of elevated bridges from which the ecological and cultural environment of the island are interpreted; learn about the history of the monkeys on the island and the different species found there while the native Indian ecological guide instructs you about their behavior, social organization, reproduction and feeding habits.

Departure of the excursion depends on these conditions:

Level of difficulty: I.

Duration of the hike: approx. 45 minutes

Minimum: 6 pax · **Maximum:** 70 pax.

Includes: River transportation, entry to the community, professional Spanish speaking guide, refreshments.

Recommendations: Shoes appropriate for walking, repellent, lightweight, light-colored (green or blue) clothing, hat, sun block, cash in small Colombian denomination for souvenir shopping, waterproof.

Note: This excursion is not recommended for pregnant women or persons under the influence of alcohol or drugs. It is not recommended for persons with back problems or recent surgery. The tour guide reserves the right to deny admittance to any participant who does not comply with these requirements (without right to reimbursement).

DEPARTURE: 8:30 A.M. · RETURN: 3:30 P.M.



BIRD WATCHING



Colombia has the world's richest bird population, with more than 800 different species of birds found in its Amazon jungle. On this excursion we will have the opportunity to admire and appreciate the wonders of nature, exotic bird specimens and some endemic ones such as *Brotogeris versicolurus*, the *Tyrannus albogularis*, Piuri - *Crax globulosa* and others. Travel in the Amazon is gratifying, and accompanied by an expert in this field, you will receive an introduction to the magical world of ornithology. Delight yourself with the concert and color of unimaginable species during this walk through the Amazon jungle.

The activity will take place in two areas, depending on the season of high waters or low waters. One of the options is in the area of La Milagrosa, which includes an agreeable walk of approximately 2 hours through small villages.

As an alternative, 25 minutes from Leticia navigating on the Amazon, we find ourselves on a small river called Gamboa, with great scenic beauty. On it we find a variety of mysterious and exotic bird species of the Amazon ecosystems. During this trip by typical motor driven boat one navigates around the island for approximately 2 hours to appreciate the beauty of the environment and enjoy the song of the birds.

Departure of the excursion depends on these conditions:

Level of difficulty: I.

Minimum: 6 pax · **Maximum:** 18 pax

Includes: River transportation on motor driven boats with capacity for 5 – 18 persons (if the excursion is to Isla Gamboa), specialized guide, binoculars, bird chart, refreshments, snack.

Recommendations: Pants and long-sleeved, light-colored (blue or green) cotton short, shoes appropriate for walking, repellent, hat, sun block, waterproof.

Note: This excursion is not recommended for pregnant women or persons under the influence of alcohol or drugs. It is not recommended for persons with back problems or recent surgery. The tour guide reserves the right to deny admittance to any participant who does not comply with these requirements (without right to reimbursement).

DEPARTURE: 5:00 A.M. · **RETURN:** 10:00 A.M.

NATURAL RESERVE EWARE AGAPE

Eware – Agape is a heavenly place located in the Amazon jungle only 20 minutes by land transport from the urban perimeter of Leticia. We will learn about the history of this eserve created by the Capuchin friars minor during the entrance walk, then go on the exquisite “Asai Path” which has a great variety of flora and solid ground type forest; we will get to know how the natives fertilize the land for cultivation of their chagras (farm plots) and we will have an encounter with the tiny Ticuna Indian community of San Pedro, where we will enjoy a short typical dance and see how they work with plant fibers to elaborate basketry and handicrafts.

Departure of the excursion depends on these conditions:

Level of difficulty: II.

Minimum: 6 pax · **Maximum:** 30 pax

Includes: Land transport by automobile (taxi or van), entry to the reserve, professional Spanish speaking guide, hydration (1 water and 1 soda), snack (1 cereal bar, 1 bag of chips and 1 soda), Asai Path, entry to San Pedro community, typical dance, hand-crafted bracelet made of plant fibers, showing of chagras with manioc and pineapple cultivation.

Recommendations: Repellent, lightweight, light-colored (green or blue) clothing, boots, sun block, hat, rain gear.

Note: This excursion is not recommended for pregnant women or persons under the influence of alcohol or drugs. The tour guide reserves the right to deny admittance to any participant who does not comply with these requirements (without right to reimbursement)

DEPARTURE: 8:00 A.M. · RETURN: 12:00M.





HUITOTO INDIAN COMMUNITY

TYPICAL DANCES

Traveling 11 kms. from Leticia by land, one finds the Huitoto Indian community. Here in the Maloka (sacred place) where the headman and his family live, heirs of ceremonial races and mambadero oral tradition, the welfare of the tribesmen is balanced and planned. Ceremonies and rituals of interrelationship with the humanized jungle are celebrated, giving example of cosmogony and the degree of intellectual development of these millennial cultures. We will appreciate some examples of different ceremonial dances.



Departure of the excursion depends on these conditions:

Minimum: 10 pax · **Maximum:** 30 pax.

Includes: Land transportation, typical dances, Indian guide, refreshments.

Recommendations: pants and long-sleeved shirt, comfortable shoes, repellent, cash in small Colombian denomination to buy handicrafts.

DEPARTURE: 6:00 P.M. · **RETURN:** 9:00 P.M.

PUERTO NARIÑO/ISLA MICOS (MONKEY FEEDING)

MACEDONIA

A complete run on the great Amazon River from Leticia where you can visit and admire diverse ecosystems such as Victoria Regia Reserve where you will appreciate the world's largest lotus. Later, you will visit the attractive Isla Micos (Monkey Island), with an extension of 450 hectares where you will get in direct contact with the dominate specie of the island, el Saimiri or Squirrel Monkey, learn about the history of the monkeys on the island and the different species found there while the native Indian ecological guide instructs you about their behavior, social organization, reproduction and feeding habits. You will be fascinated by the fauna and flora of the environment. Upriver we will find a community of Tikuna native tribesmen: Macedonia, a perfect place to appreciate the handicrafts designed and elaborated by the inhabitants, among which stand out tapestries and dolls made of yanchama (tree bark), beautiful accessories elaborated from seeds and feathers, spectacular carrying bags woven with chambira, and a great variety of objects such as pensadores, walking sticks, belt buckles and necklaces elaborated with palosangre (*brosimum rubescens* taub), a very fine type of wood and of great cultural value for many of the native communities of the region. Any of these handicrafts would make the perfect gift to take to our loved ones. Next comes a trip to Puerto Nariño, the second largest municipality in the department; a very typical village inhabited by natives and colonos (settlers) (denominated the manger of Colombia).

Returning to Leticia, in the tributaries near Lake Tarapoto you will be able to appreciate pink dolphins, freshwater mammals, very striking for their unique color; he enjoys of this privilege in this region of the country, since it is not a species that can be seen with frequency except for this habitat.

Departure of the excursion depends on these conditions:

Level of difficulty: I · **Minimum:** N/A · **Maximum:** 60 pax

Duration of Isla Micos Activity: 40 minutes aprox.

Duration of Puerto Nariño´s Hike: 45 minutes aprox.

Includes: River transportation by typical motor driven boats with capacity for 5 – 29 people, entry fee to Natural Reserve Flor de Ito, Isla de los micos, Macedonian community of Tikuna, Natutama Museum (2 modules, underwater world and night beach), professional guide, refreshments, typical lunch.

Recommendations: shoes appropriate for walking, repellent, lightweight, light-colored (green or blue) clothing, hat, sun block.

Note: This excursion is not recommended for pregnant women or persons under the influence of alcohol or drugs. It is not recommended for persons with back problems or recent surgery. The tour guide reserves the right to deny admittance to any participant who does not comply with these requirements (without right to reimbursement).

Important: the observation of dolphins, and other types of fauna and flora depends on natural conditions.

DEPARTURE: 8:00 A.M. · RETURN: 5:00 P.M.





AMAZON WORLD ECOLOGICAL PARK

The Amazon World Ecological Park is the first and only environmental education center in the municipality of Leticia. It is a space to see Amazonian plants, learn about traditional and medicinal uses while enjoying an interactive, fun and unforgettable experience learning about the biodiversity of the Amazon, ecology, agrotourism and much more. It is the first visit you should make in the Amazon. The visit includes 4 routes accompanied by a native environmental interpreter::

1. MEDICINAL PLANTS (The largest organized collection of Amazonian plants in the department, 6 pedagogical stations and Amazon Tea tasting)
2. NATURAL PRODUCTS (Meet native plants and fruits used in sustainable development systems in the Amazon, sustainable production processes and environmental education)
3. CULTURAL VILLA (Have fun with bow and arrow, and darts with blowguns throwing activities)
4. AQUARIUS (Meet the piranhas and many other Amazon fish)

Departure of the excursion depends on these conditions:

Level of difficulty: I

Minimum: N/A · **Maximum:** 30 Pax

Load capacity: 10 pax per route.

Duration of the Walk in Puerto Nariño: 45 minutes aprox.

Includes: land transportation by car, entrance to the Amazon World Ecological Park, 4 eco routes, 1 bottle of water.

Recommendations: Repellent, light colored clothes, appropriate walking shoes, sunscreen, hat.

Note: People with alcohol or drug influence will not be accepted.

DEPARTURE: 9:00 A.M. · **RETURN:** 12:00 M.

DEPARTURE: 2:00 P.M. · **RETURN:** 5:00 P.M.

AMAZON WORLD JUNGLE FULL DAY

The Amazon World Ecological Park is the first and only environmental education center in the municipality of Leticia. It is a space to see Amazonian plants, learn about traditional and medicinal uses while enjoying an interactive, fun and unforgettable experience learning about the biodiversity of the Amazon, ecology, agritourism and much more. It is the first visit you should do in the Amazon. The visit includes 4 routes accompanied by a native environmental interpreter:

1. MEDICINAL PLANTS (The largest organized collection of Amazonian plants in the department, 6 pedagogical stations and Amazon Tea tasting)
2. NATURAL PRODUCTS (Meet native plants and fruits used in sustainable development systems in the Amazon, sustainable production processes and environmental education)
3. CULTURAL VILLA (Have fun with bow and arrow, and darts with blowguns throwing activities)
4. AQUARIUS (Meet the piranhas and many other Amazon fish)

At noon the traditional lunch will be taken: Patarasca: local fish cooked in charcoal wrapped in bijao leaves, accompanied with native ingredients such as fariña, tapioca, tucupí pepper, rice, organic salad, and natural juice. Then, jungle walk on a beautiful hour and a half trail.

Departure of the excursion depends on these conditions:

Level of difficulty: I

Minimum: 2 Pax · **Maximum:** 30 Pax

Load capacity: 10 pax per route.

Includes: land transportation by car, entrance to the Amazon World Ecological Park, 4 eco routes, 1 bottle of water, lunch and jungle trail.

Recommendations: Repellent, light colored clothes, appropriate walking shoes, sunscreen, hat.

Note: People with alcohol or drug influence will not be accepted.

DEPARTURE: 9:00 A.M. · RETURN: 3:00 P.M.



VISIT HUITOTO
MALOKA
INDIGENOUS VILLAGE



This interesting activity includes a run of approximately 15 minutes from the urban part of Leticia to our departure point, from which we will take a walk that will last about 45 minutes. Our foray into this ecosystem will be made over cleared paths. During our walk we will learn about the quality of the land, the forest dynamic, and identify some species of trees like the rubber tree, the history and method of extraction of rubber in the Amazon.

Once we have been instructed about the domestic and ritual space in the village, the Shaman will invite us to the mambeadero, the village's sacred site, to start the talk where he will show us the entheogens used by the Huitotos in their daily life and rituals. This talk will last an hour with space for questions.

During a short tour around the maloca accompanied by the Shaman, he will show us the yagé or soul liana, tobacco plants, coca leaf cultivation and other plants used in the Huitoto ethno-botany.

Departure of the excursion depends on these conditions:

Minimum: 6 Pax · **Maximum:** 20 Pax (twice a day)

Includes: land transfer, professional guide, hydration (1 bottle of water), forest tour on firm soil, entrance to the Huitoto maloca and talk with the Shaman.

Recommendations: long pants and long-sleeved shirt, comfortable shoes, insect repellent, sun block, hat for the sun, rubber boots, and rain poncho.

Note: We will not accept persons under the influence of alcohol or drugs.

Observation: Reservations for this activity must be made a minimum of half a day in advance.

DEPARTURE: 9:00 A.M. · **RETURN:** 12:00M.

DEPARTURE: 3:00 P.M. · **RETURN:** 7:00 P.M.

NATURAL RESERVE MARASHA – PERÚ

A Refuge made out of natural conditions whose typical architecture of Malocas designed and built under the rules of environmental preservation of biodiversity. We offer visitors a placid stay so they can relax and recreate their minds coexisting with the exotic nature. A 45 minutes journey to an hour to the facilities of the hostel Marasha mark the prelude to the magical feeling of life that only MARASHA can offer.

The walk through a broad path into the jungle with its huge trees and varied vegetation can be recorded best, by photographic images or video, also contemplating the landscape with its fauna species such as monkeys, butterflies and multicolored birds.

Departure of the excursion depends on these conditions:

Minimum: 6 Pax · **Maximum:** 29 Pax

Includes: land transfer, professional guide, snack, boating, Sport fishing, ecological walk, lunch, rest area, hydration, local guide.

Recommendations: long pants and long-sleeved shirt, comfortable shoes, insect repellent, sun block, hat for the sun, rubber boots, and rain poncho.

Note: This excursion is not recommended for pregnant women or persons under the influence of alcohol or drugs. It is not recommended for persons with back problems or recent surgery. The tour guide reserves the right to deny admittance to any participant who does not comply with these requirements (without right to reimbursement).

Observation: Reservations for this activity must be made a minimum of half a day in advance.

DEPARTURE: 8:00 A.M. · **RETURN:** 5:00 P.M.





NIGHT WALK THROUGH THE JUNGLE

OMAGUA OR ÁGAPE RESERVE

The Amazon jungle has a great extension of solid ground which corresponds to more than three quarters of the Amazon River basin; this is the perfect opportunity to get acquainted with the jungle setting in the night hours.

We will cover 10 kilometers departing from the urban part of Leticia to enter the Omagua reserve where we will visit areas known as floodable terraces and solid ground forest, accompanied by a guide who will emphasize the observation of minor nocturnal fauna (insects, birds, mammals, amphibians and reptiles), and we will see the phenomenon of bio-luminescence, practice identifying jungle sounds and test our nighttime senses of touch, smell and sound.



Departure of the excursion depends on these conditions:

Level of difficulty: I

Minimum: 6 Pax · **Maximum:** 20 Pax

Minimum Age: 7 years old

Includes: land transfer, professional guide, hydration (1 bottle of water), flashlight, walk through solid ground forest, entrance to the Reserve.

Recommendations: long pants and long-sleeved shirt, comfortable shoes, insect repellent, rubber boots, and rain poncho.

Note: We will not accept persons under the influence of alcohol or drugs.

Observation: Reservations must be made a minimum of half a day in advance.

DEPARTURE: 6:00 P.M. · **RETURN:** 9:00 P.M.

AMAZON WORLD + HUITOTO COMMUNITY

The Amazon World Ecological Park is the first and only environmental education center in the municipality of Leticia. It is a space to see Amazonian plants, learn about traditional and medicinal uses while enjoying an interactive, fun and unforgettable experience learning about the biodiversity of the Amazon, ecology, agrotourism and much more. It is the first visit you should do in the Amazon. The visit includes 4 routes accompanied by a native environmental interpreter:

1. MEDICINAL PLANTS (The largest organized collection of Amazonian plants in the department, 6 pedagogical stations and Amazon Tea tasting)
2. NATURAL PRODUCTS (Meet native plants and fruits used in sustainable development systems in the Amazon, sustainable production processes and environmental education)
3. CULTURAL VILLA (Have fun with bow and arrow, and darts with blowguns throwing activities)
4. AQUARIUS (Meet the piranhas and many other Amazon fish)

At noon the traditional lunch will be taken: Patarasca: local fish cooked in charcoal wrapped in bijao leaves, accompanied with native ingredients such as farinha, tapioca, tucupí pepper, rice, organic salad, and natural juice. Then walk to the Huitoto community located 300 meters from the Park, talk with the traditional wiseman of the indigenous community in the maloca, about their culture and customs..

Departure of the excursion depends on these conditions:

Level of difficulty: I

Minimum: 2 pax · **Maximum:** 20 pax

Includes: Land transportation by car, entrance to the Amazon World Ecological Park, 4 eco routes, 1 bottle of water, lunch and visit to indigenous community.

Recommendations: Repellent, light colored clothes, appropriate walking shoes, sunscreen, hat.

Load capacity: 10 people per route.

Note: People with alcohol or drug influence will not be accepted.

DEPARTURE: 9:00 A.M. · RETURN: 3:00 P.M.





PANORAMIC CITY TOUR OF LETICIA & TABATINGA

Tour of Leticia, capital of Amazonas; visit the Ethnographic Museum of Amazonian Man where you can see an extensive collection of objects and utensils used by various indigenous cultures; a tour of the city parks and streets where you will find a wide range of handicraft shops and the local market.

We will visit the frontier city of Tabatinga (Brazil), appreciate a little of the Brazilian architecture, shop for the famous "Azaleia" brand of sandals, visit the House of Chocolate where you can buy the famous "Garoto" chocolates and Brazilian handicraft stores.

One of the distinctives of the Brazilian culture is the Capoeira, which combines dance, music and acrobatics. Beyond being a Brazilian martial art, it is a way to express yourself with your body, a very important element in the cultures of this region. On this tour you will have the chance to take classes given by a Master in this fabulous Art, which previously was imparted in secret and today has been converted in a form of social integration.

Departure of the excursion depends on these conditions:

Level of difficulty: I

Minimum: 6 pax · **Maximum:** 20 pax

Includes: Land transport, accompanying guide, hydration and entry to the sites.

Recommendations: Comfortable clothing and shoes, cap or hat, sun block, cash for shopping.

Note: We will not accept persons under the influence of alcohol or drugs.

DEPARTURE: 9:00 A.M. · **RETURN:** 12:00M.

DEPARTURE: 2:00 P.M. · **RETURN:** 5:00 P.M.



VISIT TO TABATINGA

We will visit the frontier city of Tabatinga (Brazil), appreciate a little of the Brazilian architecture, shop for the famous "Azaleia" brand of sandals, visit the House of Chocolate where you can buy the famous "Garoto" chocolates and Brazilian handicraft stores.

Also, we will visit "La Comara" Viewpoint and the local airport.

Departure of the excursion depends on these conditions:

Level of difficulty: I

Minimum: 2 pax · **Maximum:** 20 pax (por Departure)

Includes: Land transport, accompanying guide, hydration.

Recommendations: Comfortable clothing and shoes, cap or hat, sun block, cash for shopping.

Note: People with alcohol or drug influence will not be accepted

DEPARTURE: 9:00 A.M. · **RETURN:** 11:00 A.M.

DEPARTURE: 4:00 P.M. · **RETURN:** 6:00 P.M.





(AGAPE/LAGOS/ BIODIVERSITY) AMAZON JUNGLE

EXPERIENCE

During this activity you will have a great Amazon experience, connecting and getting acquainted with an ample biodiversity of scenes, starting with a walk through the dense jungle with its huge quantity of sounds, some species of primates, a variety in the etymological field, to arrive three hours later at the community of San Pedro to get to know a little of the Ticuna ethnic group, their customs and way of life; to continue our adventure going through the settings of ravines and lakes which form part of the great ecosystem of the lakes of Yahuarkaka (Zapatero, Sicurishu and Camboia II Lakes), which will fascinate you with their magic and the rich variety of birds. You can swim in the ample lakes, and why not? – with a little luck – spot some dolphins during the tour.

At the Flor de Loto Reserve a delicious lunch typical of the region awaits us. You can also do some small-scale sport fishing and savor the landscape in comfortable hammocks.

Departure of the excursion depends on these conditions:

Level of difficulty: I

Minimum: 4 pax · **Maximum:** 30 pax

Length of jungle walk: Approximately 3 hours

Includes: Overland transport in motorized vehicle (taxi or van), entrances to the Ágape and Flor de Loto Reserves, entrance to the de San Pedro community, hydration (2 waters and 1 soft drink), snack (1 pack of soda crackers), professional guide, demonstration of cultivation of family agricultural plots, small-scale fishing, swimming in lakes, tour in typical canoes with life jackets, typical lunch (fried rice, fish cracklings, ripe plantain), rest stop in hammocks.

Recommendations: Insect repellent, lightweight, light-colored clothing (green and blue), boots, sunblock, hat or head covering, raingear, bathing suit, change of clothing, ability to swim.

Note: We will not accept persons under the influence of alcohol or drugs.

DEPARTURE: 8:30 A.M. · RETURN: 3:30 P.M.

AMAZON SUNSET

Sundown in the Amazon is full of magic. When night falls, the jungle awakens and delights our senses with wonderful sounds and energetic night life. You can see insects that glow in the dark and listen to the jungle calls under a beautiful starry sky.

We begin the tour by boat through the lakes where if nature allows, we will see pink dolphins and the return of the birds to their roosts in Yahuaraca. When night falls, we will penetrate deeper into the flooded jungle of Lake Zapatero and, as explorers, we can appreciate the treetops, the beautiful Renaco – known as the tree that walks – and many nocturnal animals that will show us a different way of life.

Departure of the excursion depends on these conditions:

Level of difficulty: I

Minimum: 2 pax · **Maximum:** 5 pax

Season: High waters (March to June)

Minimum Age: 6 years old

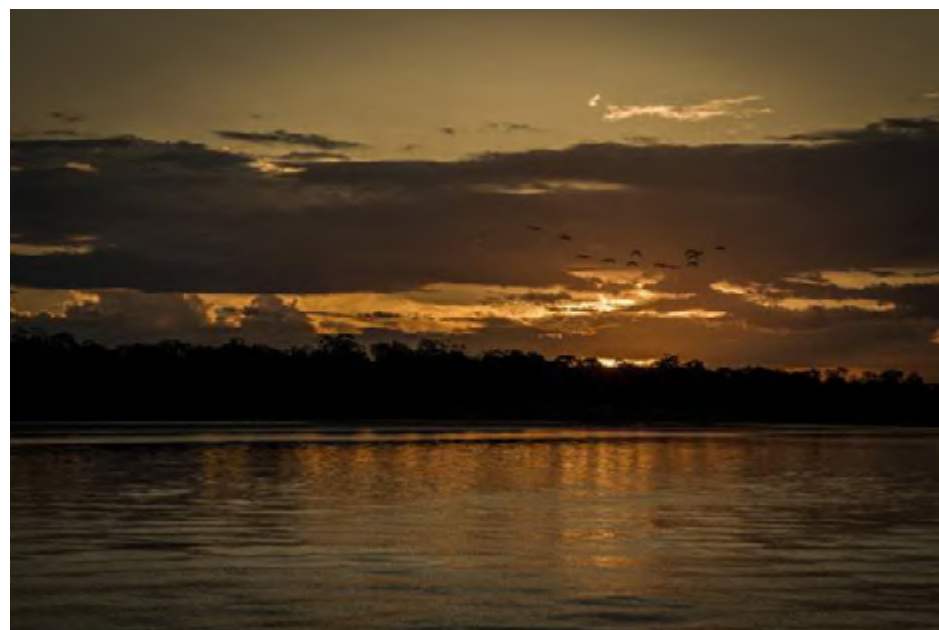
Maximum Age: 65 years old

Includes: Overland transport hotel-lake-hotel, water transport in launch, accompanying guide, environmental interpreter, 1 bottle of water per person, snack, medical assistance from Adventure Tourism.

Recommendations: long pants and long-sleeved shirt, insect repellent, comfortable closed shoes.

Note: We do not accept pregnant women, persons with back problems or participants under the influence of alcohol or drugs.

DEPARTURE: 5:30 P.M. · RETURN: 8:00 P.M.





AMAZON JOURNEY

We travel along the road until kilometer 10, we start a walk through the highland forest watching the lush vegetation, flora and fauna through paths for approximately 2 hours, heading to the indigenous community of San Pedro, Ticuna ethnicity, located on the shores of the Yahuaracaca gorge, there you will know their customs and culture, then navigate downstream in kayak, canoe, or motor boat according to your choice and level of the waters towards the lagoon system of low zone or varzea, and then access the lakes and enjoy the beautiful natural landscape, take a bath and the possibility of observing the fauna in the place: monkeys, pink dolphins and the great regal victory.

At the end we will enjoy a delicious meal, with the taste of our Amazon region in a unique, pleasant and quiet environment with showers and bathrooms.



Departure of the excursion depends on these conditions:

Level of difficulty: I

Minimum: 3 pax · **Maximum:** 12 pax

Includes: Transfers, local guide, snack, lunch, a bottle of water and entrance to the indigenous communities.

Recommendations: Pants and long cotton shirt in light colors (blue or green), appropriate walking shoes, repellent, hat, sunscreen.

Note: Women in pregnancy, people with spinal problems, or people with alcohol or drug influence will not be accepted.

DEPARTURE: 9:00 A.M. · **RETURN:** 2:00 P.M.

FULL DAY AMAZON WORLD BIRDERS

The Amazon World Ecological Park is the first and only environmental education center in the municipality of Leticia. It is a space to see Amazonian plants, learn about traditional and medicinal uses while enjoying an interactive, fun and unforgettable experience learning about the biodiversity of the Amazon, ecology, agrotourism and much more. It is the first visit you should do in the Amazon. The tour starts early on the different ecological trails of the Amazon World nature reserve. During the walk you can see native species of Tanagers, Woodpeckers, Nunbirds, Kingbirds, Parrots, Hummingbirds, Owls, and other endemic and migratory species of the Amazon. Then breakfast and rest to start the 4 Amazon World routes accompanied by a native environmental interpreter:

1. MEDICINAL PLANTS (The largest organized collection of Amazonian plants in the department, 6 pedagogical stations and Amazon Tea tasting)
2. NATURAL PRODUCTS (Meet native plants and fruits used in sustainable development systems in the Amazon, sustainable production processes and environmental education)
3. CULTURAL VILLA (Have fun with bow and arrow, and darts with blowguns throwing activities)
4. AQUARIUS (Meet the piranhas and many other Amazon fish)

At noon the traditional lunch will be taken: Patarasca: local fish cooked in charcoal and wrapped in bijao leaves, accompanied with native ingredients such as fariña, tapioca, tucupí pepper, rice, organic salad, and natural juice.

Departure of the excursion depends on these conditions:

Level of difficulty: I

Minimum: 4 pax · **Maximum:** 6 pax

Includes: land transportation by car, entrance to the Amazon World Ecological Park, 4 eco routes, 1 bottle of water, breakfast, lunch and specialized bird guide.

Recommendations: repellent, light colored clothes, appropriate walking shoes, sunscreen, hat.

DEPARTURES: 5:00 A.M. · RETURN: 1:30 P.M.





BIRD OBSERVATION ON KAYAK OR CANOA

Colombia, the most biodiverse country in the world regarding birds, offers you the unique opportunity to appreciate the more than 1912 species of birds and in this Special area of the Amazonian trapeze between Leticia and Atacuari that has around 550 species of endemic, resident and migratory, southern and boreal birds.

If you are a bird lover, the nature on this tour gives you the opportunity to find a wide variety of species that are observed throughout the year, such as tuquito, herons, kingfisher, Carpenters, ducks, eagles, hoatzins, jays, orioles, seagulls, hawks, parakeets, parrots and macaws accompanied by a guide specialized in observation of Amazonian birds. According to the time of the year we can do it in kayaks, canoes, motor boat and jungle walks, according to the visitor taste.

Departure of the excursion depends on these conditions:

Level of difficulty: I

Minimum: 2 pax · **Maximum:** 5 pax

Includes: Transfers, local guide, snack and a bottle of water.

Recommendations: Pants and long cotton shirt in light colors (blue or green), appropriate walking shoes, repellent, hat, sunscreen.

Note: Women in pregnancy, people with spinal problems, or people with alcohol or drug influence will not be accepted.

DEPARTURES: 5:00 A.M. · **RETURN:** 9:00 A.M.



BIRD OBSERVATION IN THE AMAZON WORLD

The Amazon World Ecological Park is the first and only environmental education center in the municipality of Leticia. It is a space to see Amazonian plants, learn about traditional and medicinal uses while enjoying an interactive, fun and unforgettable experience learning about the biodiversity of the Amazon, ecology, agrotourism and much more. It is the first visit you should do in the Amazon.

The tour starts early on the different ecological trails of the Amazon World nature reserve. During the walk you can see native species of Tanagers, Woodpeckers, Nunbirds, Kingbirds, Parrots, Hummingbirds, Owls, and other endemic and migratory species of the Amazon.

Departure of the excursion depends on these conditions:

Level of difficulty: I

Minimum: 2 pax · **Maximum:** 6 pax

Includes: Land transportation by car, entrance to the Amazon World Ecological Park, specialized guide for birds, coffee or aromatic cookies.

Recommendations: Repellent, light colored clothes, appropriate walking shoes, sunscreen, hat.

Note: People with alcohol or drug influence will not be accepted.

DEPARTURES: 5:00 A.M. · RETURN: 8:30 A.M.





NIGHT WALK IN THE AMAZON WORLD

The Amazon World Ecological Park is the first and only environmental education center in the municipality of Leticia. It is a space to see Amazonian plants, learn about traditional and medicinal uses while enjoying an interactive, fun and unforgettable experience learning about the biodiversity of the Amazon, ecology, agrotourism and much more.

It is the first visit you should do in the Amazon. hike inside the jungle path where you can enjoy the sounds of the jungle, luminescent mushrooms and wildlife that comes at night like tarantulas.



Departure of the excursion depends on these conditions:

Level of difficulty: I

Minimum: 2 pax · **Maximum:** 6 pax

Includes: Ground transportation by car, entrance to the Amazon World Ecological Park, accompaniment of environmental interpreter.

Recommendations: repellent, comfortable clothes and long-sleeved shirt, rubber boots, cap or hat.

Note: People with alcohol or drug influence will not be accepted

DEPARTURE: 6:30 P.M. · RETURN: 8:30 P.M.

DAYTIME OR NIGHTTIME HIKE AT RESERVA NATURAL **TANIMBOCA**

Daytime Hike (1 hour)

An approximately 1-hour hike through trails within the Reserve, during which you will be able to observe various plant and wildlife species, as nature allows, and feel connected with nature. You will also be able to discover all our Reserve's installations.

Nighttime Hike (2 hours)

Activity in the jungle during the day transforms and becomes even livelier at night. We will be able to observe a variety of animals according to the established route, appreciating the sounds and smells that can only be experienced in the Amazon.

Departure of the excursion depends on these conditions:

Level of difficulty: II

Minimum: 3 pax · **Maximum:** 20 pax

Minimum Age: 3 years old · **Edad Máxima:** 60 years old

Includes: Ground transportation, access to Reserva Natural Tanimboca, 1 bottle of water, assistance from an environmental interpreter.

Recommendations: Insect repellent, comfortable clothes and a long-sleeve shirt, rubber boots, a cap or hat and sunscreen.

Observation: Reservations may be made at least one day beforehand.

Note: Pregnant women, people with spine or back problems or recent surgeries or people under the influence of alcohol or drugs will not be accepted..

DAYTIME SCHEDULE: 9:00 AM – 12:00 M // 1:00 PM – 4:00 PM

NIGHTTIME SCHEDULE: 6:00 PM – 08:30 PM



GENERAL INFORMATION

AMAZONAS

- Official name of the Department: : Amazonas
- Capital City: Leticia
- Temperature: 30° C
- Population: 55,000 inhabitants
- Area: 10.665 Km2
- How to get there: By air or river travel
- Indian Population: Huitotos, Yaguas, Tukunas, Ticunas, Boras, Andoques.
- Economy: Lumber extraction, fishing, tourism.
- Airport: Vásquez Cobo

RECOMMENDATIONS FOR THE TRIP

LUGGAGE

Take comfortable luggage, cotton clothing, pants and long-sleeved shorts, hat or cap, bathing suit, sunglasses, raingear, flashlight, rubber boots, photographic camera, insect repellent, tennis or comfortable shoes, sun block, medicines you are using at the time of your trip, waterproof.

DOCUMENTS

Take travel tickets and identification papers such as proof of citizenships (citizen ID card) or foreign residency card or visa, or passport (verify that passport is in force). Hand carry documents in airports.

VACCINES

Vaccination card for Tetanus and Yellow fever. Vaccinate minimum two weeks before trip.

PRECAUTIONS

It is important to take repellent to avoid insect bites.

Take small extra backpack for outings.

When putting on shoes (boots or tennis shoes), shake them well to avoid accidents.

Do not touch or slide hands along railings of the platforms in the Parks, nor remove trunks or Rocks.

Do not remove fauna, flora or mineral matter from the Parks or visited zones.

Do not leave trash in the area of the different Parks nor in the visited sites; take it back to the city and put it in an adequate place.

Take cash in Colombian pesos.

**IMPORTANT: SIGHTING OF FLORA AND WILDLIFE
IS LIMITED TO NATURAL FACTORS.**

OUR
CONTACTS
AMAZONAS

FABIO CONTRERAS - HEAD OF SALES AND OPERATIONS

E-mail: amazonas.receptivosexplorer@decameron.com

Phone.: (57) (8) 592 4196 · CelPhone: (57) 317 6488820

Fax: (57) (8) 5924197



we are

A V E N T U R E

DECAMERON
EXPLORER
THE ADVENTURE STARTS HERE



HAITI · EL SALVADOR · COLOMBIA · PANAMA · PERU · ECUADOR